

beta III Tubulin Ab (HRP)

Cat No.: SJ-AB3262



Applications

Reactive Species

Human, Mouse, Rat

Positive Samples

Refer to Validation Data.

Validated Applications

WB

Recommended Dilution

WB 1:5000-1:10000

Product Information

Antibody Type

Recombinant Rabbit mAb

Immunogen

A synthesized peptide derived from human beta III Tubulin (HRP).

Modification

Unmodified

Isotype

Rabbit IgG

Clone No.

N/A

Purification Method

Affinity purification

Form

Liquid

Host

Rabbit

Clonality

Monoclonal

Conjugation

HRP

Concentration

N/A

Storage Buffer

Rabbit IgG in 10mM phosphate buffered saline, pH 7.4, 150mM sodium chloride, 0.05% BSA, 0.02% sodium azide and 50% glycerol.

Storage Conditions

Store at +4°C for short term. Store at -20°C for long term. Avoid freeze/thaw cycle.

Background Information

Function

Tubulin is the major constituent of microtubules, a cylinder consisting of laterally associated linear protofilaments composed of alpha- and beta-tubulin heterodimers. Microtubules grow by the addition of GTP-tubulin dimers to the microtubule end, where a stabilizing cap forms.

UniProt ID

Q13509

Organism

Human

Recommended Name

N/A

Short Name

N/A

Alternative Names

beta-4; CFEOM3A; MC1R; TBB3; TUBB3; TUBB4; Tubulin beta-3 chain; tubulin beta-4; Tubulin beta-4 chain; Tubulin beta-III; tubulin, beta 3; tubulin, beta, 4, beta tubulin;

Gene ID

N/A

Gene Name

N/A

Calculated MW

50 kDa

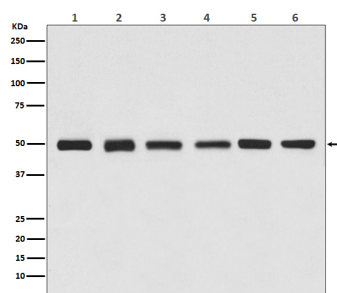
Observed MW

50 kDa

Subcellular Location

N/A

Validation Data



Western blot analysis of beta Tubulin expression in (1) Jurkat cell lysate, (2) Human kidney lysate, (3) 3T3 cell lysate, (4) Mouse brain lysate, (5) C6 cell lysate, (6) Rat heart lysate.

NOTICE: For research use only. Not for therapeutic or diagnostic purposes.

Contact

For technical support and original validation data for this product please contact:

T: 400-018-6916

E: support@sanjingbio.com

W: www.sanjingbio.com